



PC TOOLS
 INCREASE YOUR PC PERFORMANCE
 REGISTRYMechanic
 Free Scan
 www.pctools.com
 Ads by Google

- Home
- Entertainment & Culture
- Food & Beverage
- Tech Talk
- Home & Garden
- Health & Beauty
- Style & Fashion
- Travel & Leisure
- Life's Journey
- New To L.A.
- Vehicles

Calendar | Masthead | Contact Us | Log In | Sitemap

Today is January 17th, 2010

Event Calendar

Click Day to View Event Details

January 2010

Su	Mo	Tu	We	Th	Fr	Sa
					1	2
3	4	5	6	7	8	9
10	11	12	13	14	15	16
17	18	19	20	21	22	23
24	25	26	27	28	29	30
31						

<< 148 events >>

Travel And Leisure : International

Email this Article
 Printer Friendly Page



Classic Abercrombie & Kent Safaris Review - Abercrombie & Kent Does It Best

By Anne Z. Cooke, Photos by Steve Haggerty/ColorWorld

Splash Magazines Worldwide

Now Available:

Los Angeles

- New York
- Chicago
- Paris
- London
- Boston
- Atlanta
- Miami
- Dallas
- San Diego
- Denver
- Las Vegas
- Detroit
- Vegas
- Toronto
- Tokyo
- Barcelona
- Bangkok
- Amsterdam
- Hawaii
- San Francisco
- Washington D.C.

Abercrombie & Kent, the global exploration company, earns top marks from our family for its deluxe wildlife safaris in Botswana's Okavango Delta, in Southern Africa.

CHIEF'S CAMP, Botswana -- When I'm lying awake, unable to sleep, I don't count sheep. Instead, I imagine Botswana's **Okavango Delta**, its **elephants** splashing in cool lagoons, **leopards** hunting alone at dusk and herds of **zebra and impala** grazing on grassy savannahs.

Moments later I picture our tour guide, Denise Silver, welcoming us at the Johannesburg airport with a smile, a baggage cart and an **Abercrombie & Kent** sign. And I remember Poniso Shamukuni, our guide at **Chief's Camp**, who discovered four furry hyena pups playing near their den, and went out of his way to show them to us.

Search

Advanced Search

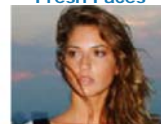


, blah blah blah



Elephant Families Bathe in the Chobe River, Chobe Chilwero Lodge

Fresh Faces



Talent



The **Okavango Delta**, where we've been twice before, is **Africa's** last bit of Eden. Protected and pristine, it's always golden, no matter when you go. But with tourism down this year, and wildlife safaris on sale, there's no better time to visit. And so we went again, this time with **Abercrombie & Kent**, the adventure tour company and Africa specialist whose **Sanctuary Lodges** define the classic African safari.

What's a **wildlife safari** all about? First, it's a chance to see **Africa's "Big Five,"** – elephants, lions, hippos, rhinos and African buffalo – with an experienced guide and from the safety of an open-sided all-terrain vehicle. We spent an hour quietly watching a pride of lions 12 feet from the rear fender, and crept past rhinos grazing at 50 feet. Baboons barked as we approached and clutching their babies, scampered toward the nearest trees. Giraffes turned their heads to watch us, and we stopped to watch them.



Thirsty Lions Pay No Attention to Awed Visitors

Splash Worldwide Latest Headlines

But a first-class Okavango safari means more than just big animals. True wilderness adventures, they provide an insight into **Botswana**, Africa's most stable and prosperous country. You'll have a chance to meet and talk to local people, and to share your experiences with like-minded travelers. Comfortable rustic lodging and delicious meals are part of the pleasure, as are trained professional guides, many of them raised in the bush. You can see it all on television, but being there in person is in a league all its own.

Recommended
Download



NEW
PC TOOLS
REGISTRY
Mechanic

DOWNLOAD

FOR FREE SCAN

Award-winning
registry
cleaner

to fix Windows®

errors and

optimize PC

performance

www.pctools.com
Ads by Google



Guided mokoro rides explore hidden waterways

THE OKAVANGO DELTA. NATURE'S EDEN:

Most rivers flow to the sea. But the Okavango River, flowing southeast from Angola and Namibia into **Botswana**, has no outlet. When spring rains fall and the river rises, it floods the Delta, flowing out in a uncounted fingers between wooded islets, and filling ponds, lagoons and marshes that support hundreds of species of mammals, birds, reptiles, insects and plants, and local and migrating birds.

To protect this unique ecosystem from being loved to death, Botswana's government adopted an enlightened policy. It divided the Delta into individual districts and leased the rights to bring in tourists to a few approved tour companies. Each outfit owns and/or operates its own lodges within its own sector, and must conform to a general set of regulations.



Travelers gather for lunch at Stanley's Camp

SAFARI LODGES AND HOW THEY WORK:

To minimize scarring the fragile terrain, all lodge structures – the main lodge, adjacent guest cabins, employee housing, kitchens and laundry – are constructed of **canvas tents** bolted onto multi-level wood decks. Usually, the living and lounge areas, bar area, library corner, dining area, gift shops and internet space are arranged under several large, connected, open-sided tents. Each guest cabin is closed, with screened walls, a front porch and door, bedroom, sitting area and private bath.



Game drives head out in mid-afternoon

A TYPICAL DAY IN CAMP:

Your wake-up call comes at 5:45 a.m. when a maid delivers a tea tray with tea or coffee and bread or sweet rolls. Dressing, you hurry to the main lodge, grabbing a piece of fruit or coffee cake to go. By 6 a.m., you've met your assigned guide and climbed into his safari vehicle – usually with four to five other guests who arrived on the same day. Before the sun comes up, you're on your way into the bush in search of wildlife: **elephants, giraffe, lions, impala, waterbuck, wildebeest**, snakes, **African buffalo, warthogs and hippos**. Midway through the morning you'll stop for a trailside breakfast.

As the day heats up and the animals disappear to nap – about 11 a.m. – each group returns for lunch. Afterwards you have time to nap, chat with fellow guests or join a guided walk. You can also shop for hand crafted art, buy batteries or toothpaste) in the gift and sundries store, check your email on the communal computer, or cool off in the **swimming pool**.



The Book of Eli
Review - a
futuristic Western



PICASSO AT THE
LAPIN AGILE
Review - a play by
Steve Martin



G2 Lifestyles
Picture Perfect
Fitness Event for
Launch of G2
Lifestyles 2010 Line

Food and Beverage



Valentine's Day
Food & Beverage
Gifts - 2010 Guide



The Himalayan
Restaurant Review
- Authentic Nepali
and Indian Food



Holiday Food and
Beverage Gift
Guide Below \$5 for
2009 - For Those

Adopt Me



RSS 2.0

Add to My Yahoo!

Add Splash
Magazine
logos to your
website:



click here



Chief's Camp, in the heart of the Delta

At 4 p.m. as the temperatures cool, the afternoon game drives begin. Male lions awake and stretch, lionesses hunt, leopards climb down from their trees and elephants and antelope move onto grassy meadows. As the sun sets, you stop on the trail for a class **sundowner – wine, spirits, beer, crackers** and cheese on the tailgate. As dusk falls, male lions begin to roar, hyenas cackle and the ponds are alive with a deafening chorus of frogs.

By 8 p.m., you're back in camp and gathering for dinner, a leisurely four-to-five course meal served with wine at family-style tables. The travelers, numbering from eight to 26, depending on the lodge, compare the day's wildlife sightings before heading to bed – escorted by a guide.



Lunchtime at Chief's Camp

Most travelers visit three lodges, staying several days in each. We added a fourth, going from [Chief's Camp](#), to [Stanley's Camp](#), to [Baines Camp](#) and finally to [Chobe Chilwero](#), south of Victoria Falls. On each transfer day, you pack your bag early and join the morning game drive as usual. Afterwards, your guide drives you to the air strip, usually a grassy field, where a high-wing single-engine plane lands and delivers arriving guests. Your bags are loaded, you buckle up, the plane takes off and 30 minutes later you're eating lunch at the next lodge on your itinerary.



Savannah and lagoons surround Baines Camp

GAME DRIVE ETIQUETTE:

Good manners and safety rules enhance safari drives with strangers. Talk softly, sit quietly and don't stand up suddenly, especially when lions and elephants are close by. If the animals are on your side of the car, slowly lean out of the way to accommodate seat mates anxious to snap photos. Surprising as it seems, lions, hyenas and other predators have learned that vehicles are not edible prey. As long as you stay in the vehicle and sit still you're in no danger.



Giraffes Find Safety in Numbers

ANIMAL SAFETY: Never walk alone outside of camp, at any time, without an escort, especially at night. Nor should you leave your tent, or return to it after dinner without an escort, usually one of the guides. Though there are no telephones, each cabin has a battery-powered horn you can activate if you're sick or need help. Later, as darkness envelops the cabin, you may hear huffing or rustling as animals prowl through the camp. Always remember, this is their space.

FAST FACTS: For more about [Abercrombie & Kent's Sanctuary \(Africa\) lodges](#) go to www.abercrombiekent.com. **South African Airways (SAA)** flies non-stop and one-stop flights from American cities to Johannesburg and Cape Town, in South Africa; at (888) 722-4872 or visit www.flysaa.com. **British Airways** flies from London through Cairo and Nairobi; visit www.britishairways.com. Dates and prices change according to the season. Look for special promotions during the current economic recession.

©The Syndicator, Anne Z. Cooke

From time to time Splash Magazines receives complementary products and services from companies. The receipt of these gifts in no way affects our reviews or opinions in our editorial coverage. Our loyalty is to you, our readers, and we will give you our honest, unbiased opinions.

Copyright © 2003 - 2010 Splash Magazines Worldwide. All rights reserved.

[Top of Page](#)

[Art & Books](#) | [Celebrity Talk](#) | [New Talent](#) | [Film](#) | [Music](#) | [Gift Suites](#) | [L.A. Charities](#) | [L.A. Events](#) | [L.A. Performances](#) |
[Restaurant Reviews](#) | [Hardware Reviews & News](#) | [Software Reviews & News](#) | [Game Reviews & News](#) | [Photography](#) | [Home](#) | [Garden](#) |
[Pets](#) | [Office](#) | [L.A. Reviews](#) | [Domestic](#) | [International](#) | [Babies & Parenting](#) | [Children & Teens](#) | [Grown up Years](#) | [Golden Years](#) | [Family](#) |
[Romance](#) | [Moving To L.A.](#) | [Visiting L.A.](#)

© 2003-2010 Splash Magazines Worldwide (All Rights Reserved)